



### Mason Jars, Wide Mouth

Durable Versatility for Large Samples or Storage

Highly shock resistant polypropylene, heavy-walled Mason Jars are ideal for industrial waste sampling, long term storage and a variety of laboratory uses. They have

standard 70mm, G-threaded necks, and screw caps with unique grip lugs and removable leak proof silicone rubber ring seal. Cap and jar are steam autoclavable at 121°C (250°F). Loosen cap when autoclaving. **Bags and case listings below**



CATALOG NO	CAPACITY LITERS US	DIAMETER	HEIGHT	CASE	PRICE/BAG
F10913-0000	½ (1 pt)	81mm (3.19")	135mm (5.3")	4 Bags	\$31.00/6
F10914-0000	1 (1 qt)	100mm (3.93")	178mm (7.0")	4 Bags	47.00/6
F10915-0000	2 (½ gal)	125mm (4.92")	213mm (8.38")	4 Bags	35.25/3
F10916-0000	4 (1 gal)	149mm (5.87")	286mm (11.25")	3 Bags	39.25/2
F10917-0000	8 (2 gal)	188mm (7.40")	334mm (13.13")	6 Each	30.00/Ea

### Mason Jar Cap

70mm G screw caps fit standard Mason Jars. Grip lugs and removable leakproof seal ring. **12 per bag, 12 dozen per case.**



CATALOG NO.	PRICE/BAG
F12640-0000	\$27.85

Heavy Duty, Leak Proof Design

### Polystormor® Square Wide Mouth Bottles

These space-efficient bottles store more samples or chemicals in limited shelf space than round bottles. Their shape makes them ideal shipping containers as well. Made of high-density polyethylene with a polypropylene screw closure.



CATALOG NO.	CAPACITY	CAP	CASE	PRICE/BAG
F10640-0002	60ml (2oz)	33mm	6 Bags	\$17.50/12
F10640-0004	125ml (4oz)	38mm	6 Bags	19.85/12
F10640-0008	250ml (8oz)	43mm	4 Bags	27.85/12
F10640-0016	500ml (16oz)	43mm	2 Bags	36.00/12
F10640-0032	1000ml (32oz)	53mm	2 Bags	30.00/6
F10640-0040	1250ml (40oz)	53mm	2 Bags	40.00/6

### Wide Mouth Bottle

Lined Polypropylene Screw Closure

A high-density polyethylene bottle offering excellent chemical and impact resistance. Polypropylene cap is foam lined. **Per each, 4 per case.**



CATALOG NO.	CAPACITY	CAP	PRICE/EACH
F10638-1010	4000ml (1 gallon)	89mm	\$11.50



Eliminate dangerous drips with these easy to assemble Patented Safety-Vented Labeled Wash Bottles.



### Safety-Vented™ Labeled Wash Bottles

U.S. Patent No. 5,125,543

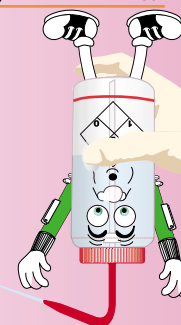
Eliminate Dangerous Drips

A unique, patented, 2-piece valve prevents pressure build-up of solvents within the wash bottle. The volatiles are vented eliminating solvent drips. Patented valve allows dispensing with bottle upright or inverted. Wash bottles are labeled with six of the most commonly used solvent names. Bottles are low-density polyethylene, closures and venting assembly are polypropylene. Note: Use only with solvents compatible with LDPE. **3 per bag.**



CATALOG NO.	LABEL	SIZE	PRICE/BAG
F11642-0622	Acetone	500ml (16oz)	\$17.00
F11642-0637	Ethanol	500ml (16oz)	17.00
F11642-0612	Ethyl Acetate	500ml (16oz)	17.00
F11642-0624	Isopropanol	500ml (16oz)	17.00
F11642-0638	LYOB (Label Your Own Bottle)	500ml (16oz)	17.00
F11642-0623	Methanol	500ml (16oz)	17.00
F11642-0611	Methyl Ethyl Ketone (MEK)	500ml (16oz)	17.00
F11643-0222	<b>NEW</b> Acetone	250ml (8oz)	12.50
F11643-0237	<b>NEW</b> Ethanol	250ml (8oz)	12.50
F11643-0224	<b>NEW</b> Isopropanol	250ml (8oz)	12.50
F11643-0238	<b>NEW</b> LYOB (Label Your Own Bottle)	250ml (8oz)	12.50
F11643-0223	<b>NEW</b> Methanol	250ml (8oz)	12.50

My patented valve allows dispensing even when upside down



Custom Labeling Available Call 1 800-4BEL-ART